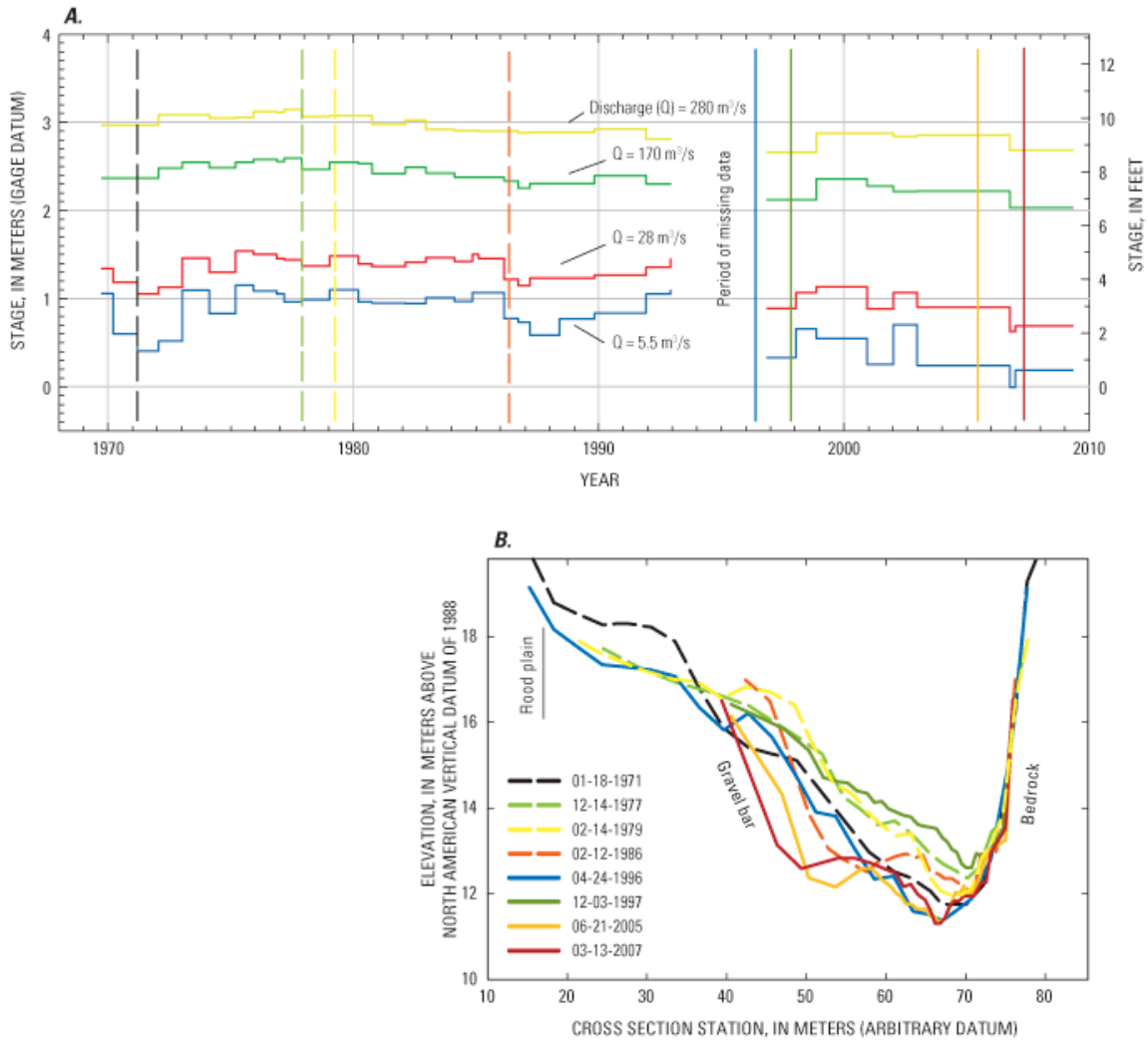


Specific Gage Analysis and Discharge-Measurement Cross-Sections for the USGS Streamflow-Gaging Station, Chetco River near Brookings, Oregon (14400000)(from Wallick and others, 2010).



(A) Specific gage analysis following approach of Klingeman (1973) and encompassing 39 ratings used between 1970 and 2008. Rating curves available at the Oregon Water Science Center in Portland, Oregon. Data for ratings 28–30 not available. (B) Selected cross sections extracted from flow measurements at gaging station cableway. Cross sections extend to flow edge for each measurement.

References

Klingeman, P.C., 1973, Indications of streambed degradation in the Willamette Valley: WRR1–21, Water Resources Research Institute Report WRR1–21, Corvallis, Department of Civil Engineering, Oregon State University, 99 p.

Wallick, J.R., Anderson, S.W., Cannon, Charles, and O’Connor, J.E., 2010, Channel change and bed-material transport in the lower Chetco River, Oregon: U.S. Geological Survey Scientific Investigations Report 2010–5065, 68 p.